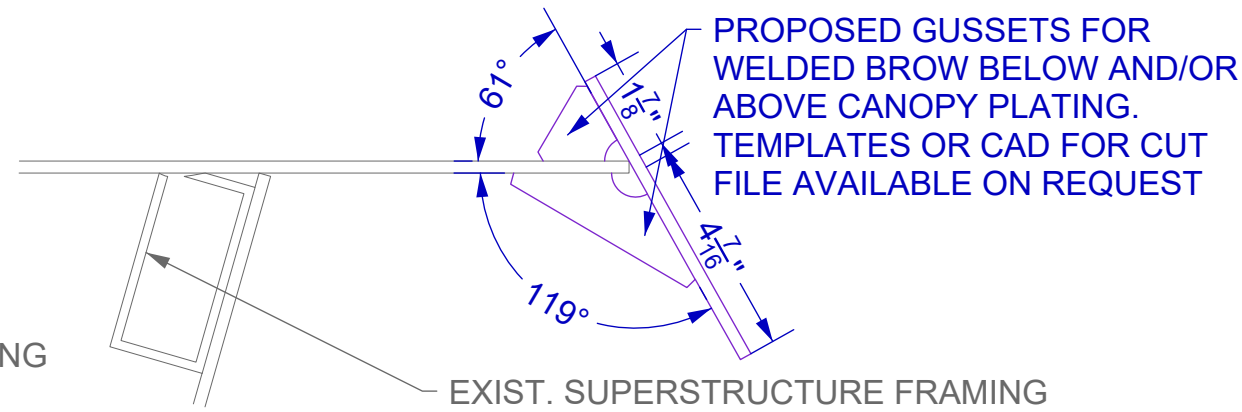
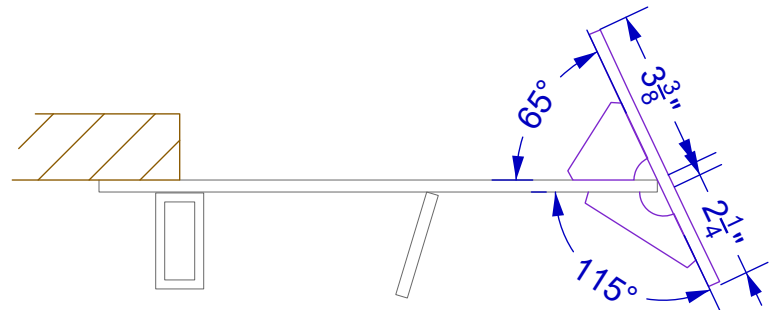
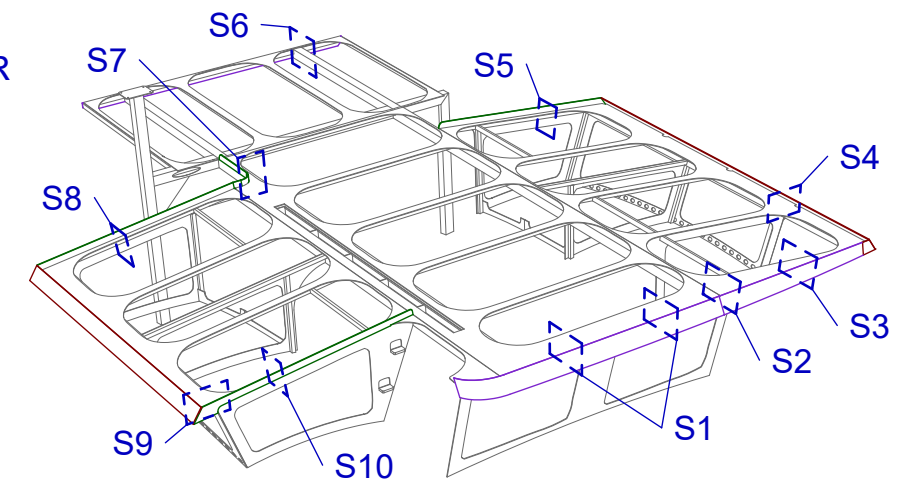


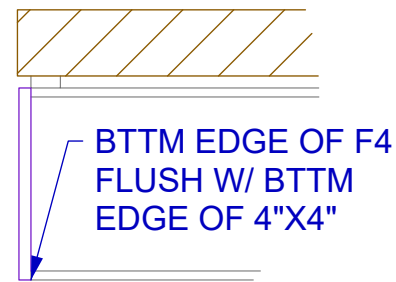
S1
LONG'L SECT 20\"/>



S2
LONG'L SECT 49\"/>



S3
LONG'L SECT 89\"/>

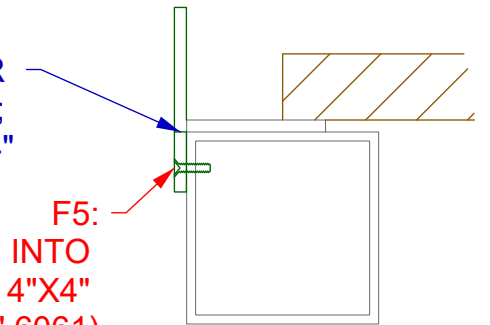


S6
LONG'L SECT IN WAY OF EXIST.
LONG'L 4\"/>

FASCIA PLATE IS CORNER-CORNER WITH EXIST. LONG'L 4\"/>

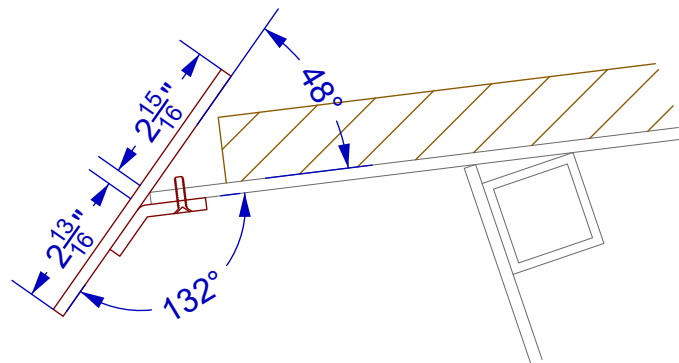
F3, F6, F8:
FASTENERS TAP INTO
EXIST. TRANSV.
SUPERSTRUCTURE
PLATING (1/4\"/>

FASTENERS TAP INTO
EXIST. LONG'L 4\"/>

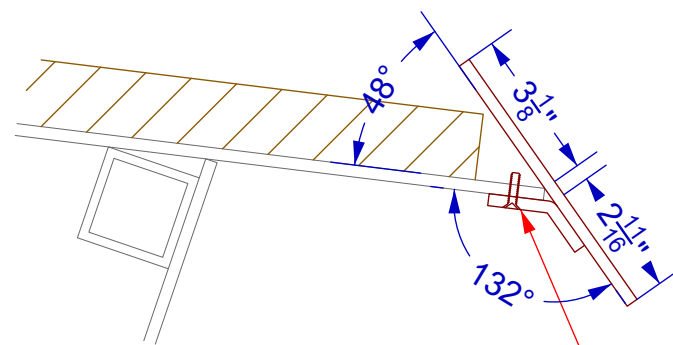


S7
TYP. TRANSV. SECT IN
WAY OF TAB ON F5

FASCIA PLATE IS CORNER-CORNER WITH EXIST. TRANSV. SUPERSTRUCT. PLATE; TABS SIT DIRECTLY AGAINST TRANSV. SUPERSTRUCT. PLATE

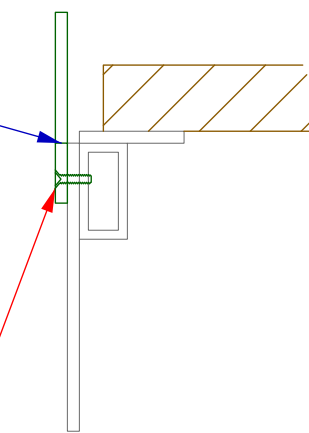


S9
TYP. TRANSV. SECT IN
WAY OF FLANGE ON F7

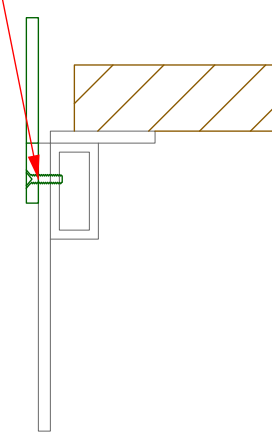


S4
TYP. TRANSV. SECT IN
WAY OF FLANGE ON F2

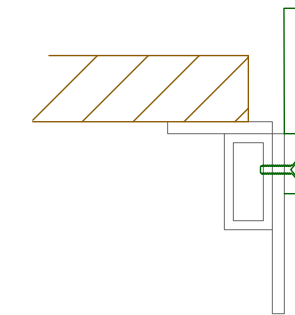
F3, F6, F8:



S5
TYP. LONG'L SECT IN
WAY OF TAB ON F3
*PERP. TO CANOPY PLATE



S8
TYP. LONG'L SECT IN
WAY OF TAB ON F6
*PERP. TO CANOPY PLATE



S10
TYP. LONG'L SECT IN
WAY OF TAB ON F8
*PERP. TO CANOPY PLATE

ALL FASTENERS FOR TABS AND FLANGES:
MCMASTER-CARR 91500A245 316 STAINLESS
STEEL PHILLIPS FLAT HEAD SCREW 10-24
THREAD SIZE 3/4\"/>

PRELIMINARY
NOT FOR
CONSTRUCTION

SOLANDER 38
SUPERSTRUCTURE FASCIA
SECTIONS & SELECTED DETAILS
3\"/>